

NuStep TRS 4000 Parts List 1.6

Note: Most parts are available individually, but to simplify installation, ASSEMBLIES (in CAPS) only come fully assembled. Items noted as *(not shown)* were replaced with current revision parts and are available as service parts, but are not shown in the Figures.

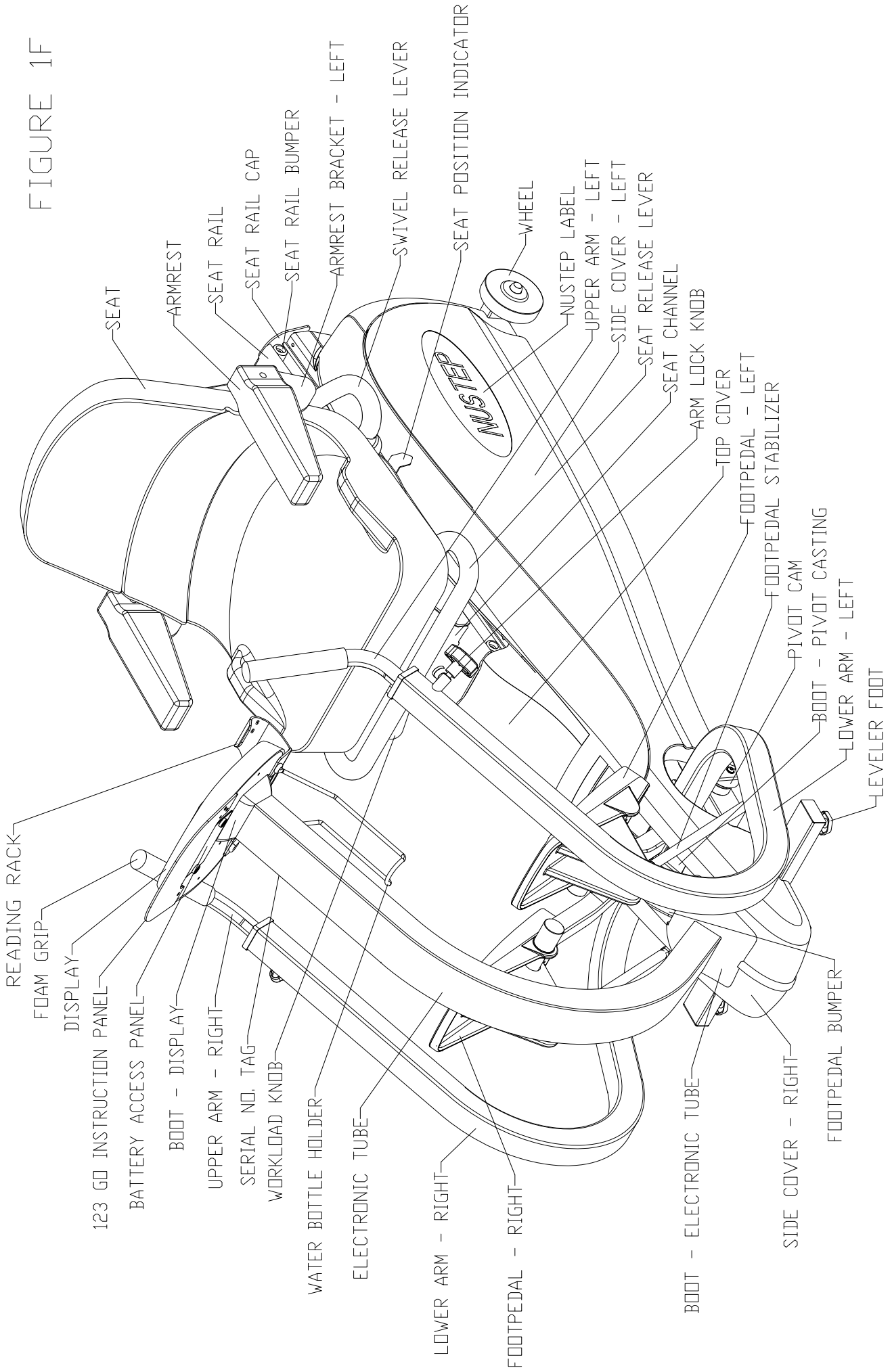
Item	Qty	PN#	Part Description	Item	Qty	PN#	Part Description
1	1	4085B	ARM-UPPER L S/N >=412392	47	1	4042A	EC MAGNET ASSY S/N >= 412485
<i>(not shown)</i>		na	ARM-UPPER L S/N 411092-412391	<i>(not shown)</i>		na	EC MAG ASSY S/N 411001-412484
<i>(not shown)</i>		na	ARM-UPPER L S/N 411001-411091	<i>(not shown)</i>		na	EC Mag Bracket S/N 411001-412484
2	1	4086B	ARM-UPPER R S/N >=412392	49	1	40424	EC Magnet Slide Bracket
<i>(not shown)</i>		na	ARM-UPPER R S/N 411092-412391	50	1	4043A	EC PLUNGER PLATE ASSY S/N >=421096
<i>(not shown)</i>		na	ARM-UPPER R S/N 411001-411091	<i>(not shown)</i>		4043	EC PLUNGER PLATE ASSY S/N <=421095
3	2	4087	ARM LOCK EXTRUSION	51	1	41050	EC Shoulder Pivot
4	1	4081A	ARM ASSY L S/N >= 412137	52	1	40140	Electronic Tube
<i>(not shown)</i>		4081	ARM ASSY L S/N 411001-412136	53	1	41254	FHPS 1/4"-20x7/8
5	1	4080A	ARM ASSY R S/N >= 412137	54	4	41052	FHPS 1/4"-20x3/4 Black
<i>(not shown)</i>		4080	ARM ASSY R S/N 411001-412136	55	2	41056	Foam Grip - Upper Arm
6	1	40128	Axle	56	1	4083A	FOOTPEDAL - L S/N >=413368
7	3	41002	Bearing - EC Disk, Roller	<i>(not shown)</i>		na	FOOTPEDAL - L S/N 411001-413367
8	8	41004	Bearing - Pivot & Footpedal, Polymer	57	1	4084A	FOOTPEDAL - R S/N >=413368
9	2	41208	Bearing - Pivot Casting, Polymer	<i>(not shown)</i>		na	FOOTPEDAL - R S/N 411001-413367
10	4	41006	Bearing - Shafts, Roller	59	1	41214	HHCS G5 1/4"-20x1
11	9	41008	Bearing - Timing Sprocket, Thrust	60	4	41066	HHCS G5 1/4"-20x3/8
12	1	41462	Belt - Poly-V J6 Flex >=428326	62	2	41210	HHCS G5 3/8"-16x1-3/4 Black
<i>(not shown)</i>		41010	Belt - Poly-V S/N <=428325	63	1	41068	HHCS G5 3/8"-16x2-1/4
13	1	41014	Belt - Timing Left	64	1	41202	HHCS G5 3/8"-16x3-3/4
14	1	41012	Belt - Timing Right	65	6	41234	HHCS G5 5/16"-18x1/2 Black
15	1	40322	Belt Clamp - Left	66	4	41218	HHCS G5 5/16"-18x1-3/4
16	1	40320	Belt Clamp - Right	67	8	41062	HHCS G5 5/16"-18x3/4
19	2	41016	Belt Idler Pulley	68	10	30104	HHCS G5 5/16"-18x5/8
20	10	41018	BHCS G8 1/4"-20x1-1/4	69	1	41256	Insulator board
21	1	40156	Boot - Display	70	2	41549	Knob - Arm Lock (Green) S/N >=432503
22	1	40148	Boot - Electronic Tube	<i>(not shown)</i>		41573B	Knob - Arm Lock (Black) S/N <=432502
23	2	40210	Boot - Pivot Casting	71	1	41551	Knob - Load Lever (Green)
24	2	4091	BRACKET ASSY - ANGLE COVER	<i>(not shown)</i>		na	Knob - Load Lever (Black)
25	2	4093	BRACKET ASSY - SIDE COVER	72	1	41076	Label - Seat Position Indicator
26	1	41024	Bumper - Footpedal Stop	73	2	41180	Label - NuStep Logo
27	2	41028	Bumper - Large	74	2	41078	Leveler Foot
28	4	41030	Bumper - Seat Rail	75	1	4044	LOAD LEVER ASSEMBLY
29	5	41026	Bumper - Small	76	4	41082	Locknut NI G5 #10-24
31	1	41184	Cable - Ribbon	77	1	41260	Locknut NI G5 1/2"-13
32	2	41036	Cap - Frame Crosstube	78	12	41222	Locknut NI G5 1/4"-20 Black
33	2	41038	Cap - Lower Arm	80	2	30157	Locknut NI G5 3/8"-16
34	1	40552	Cap - Seat Rail	81	2	41216	Locknut NI G5 3/8"-16 Black
36	12	30267	Clamp - Ribbon Cable	82	16	30106	Locknut NI G5 5/16"-18
37	1	4076	CONNECTING LINK ASSY-SERVICE KIT	83	10	30109	Lockwasher - Split 5/16"
38	1	4090	COVER ASSY - L	84	6	41220	Lockwasher - Split 5/16" Black
39	1	4092	COVER ASSY - R	85	1	41088	Machine Key 1/4x1/4x1-1/2"
40	1	4094	COVER ASSY - TOP	86	2	40236	Machine Key 3/16x3/16x2-1/2"
41	1	40154A	Battery Access Panel S/N>=421388	88	1	4100A	MAIN FRAME ASSY S/N>=413368
<i>(not shown)</i>		40154	Battery Access Panel S/N<=421387	<i>(not shown)</i>		4100	M FRAME ASSY S/N411001-413367
42	1	40150	Display - Bracket Assembly	89	2	30564	Nut - Serrated Flange G5 5/16"-18
43	1	4800	DISPLAY ASSY REV 2.1	91	2	41477	Clip Bearing - 3/4"
44	1	40132	EC Ball Detent Plate	92	4	41476	Clip Bearing - 3/8"
45	1	41046	EC Ball Plunger	93	5	41474	Clip bearing - 5/16"x3/8"
46	1	4041A	EC DISK ASSY S/N >= 411115	94	1	4108	PCBOARD ASSEMBLY - WORKLOAD
<i>(not shown)</i>		4041	EC DISK ASSY S/N 411001-411114	95	2	30162	PHPS T/S Typ B #8x3/8" Black
				96	2	41246	PHPS Typ F #10-24x3/8 Black
				97	7	41100	PHPS w/ext washer #10-24x3/8 Blk

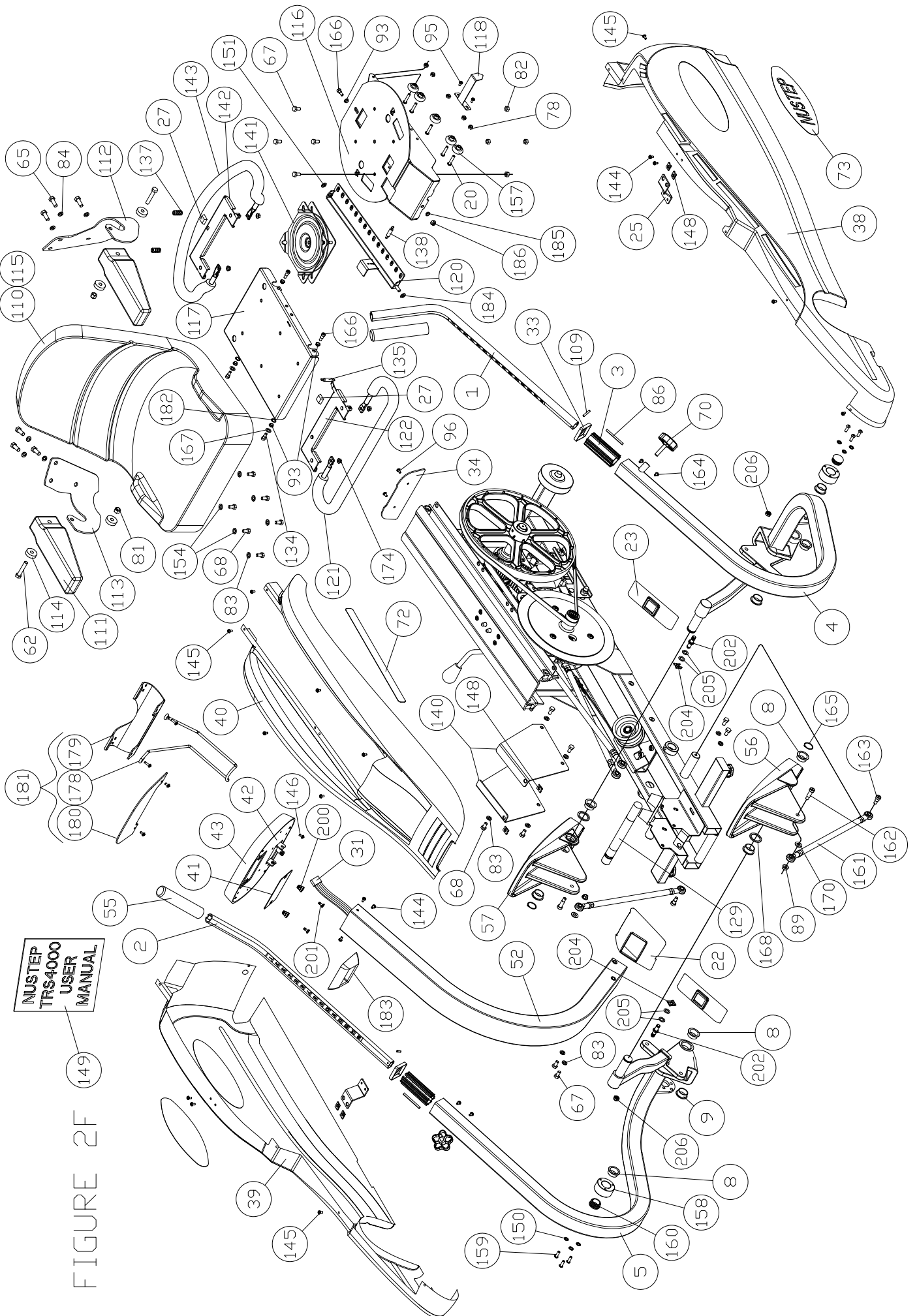
NuStep TRS 4000 Parts List 1.6

Note: Most parts are available individually, but to simplify installation, ASSEMBLIES (in CAPS) only come fully assembled. Items noted as *(not shown)* were replaced with current revision parts and are available as service parts, but are not shown in the Figures.

Item	Qty	PN#	Part Description	Item	Qty	PN#	Part Description
99	1	4072	PIVOT DISK ASSEMBLY	151	1	41270	Washer - M6.4x12
100	1	41801	Polar Receiver	152	3	30333	Washer - Nylon .75x1"
101	1	41407A	Poly-V Sheave S/N >=428326	153	4	41166	Washer - Seat Wheel Black
<i>(not shown)</i>		41407	Poly-V Sheave S/N 424793-428325	154	4	30613	Washer - Swivel 5/16"
<i>(not shown)</i>		40332	Poly-V Sheave S/N <=424792	155	22	30126	Washer - USS 5/16"
102	8	41182	Poprivet 1/8x3/16"	156	2	41170	Wheel - Rear
103	2	30141	Pushnut 3/8"	157	10	41502	Wheel - Seat
107	1	41114	Retaining Ring - Selflocking 3/4"	158	2	41318	Pivot Cam
108	1	41258	Retaining Ring - Takeup 1/2"	159	6	41480	1/4-20x3/4" NLK BHSCS, Black Zinc
109	2	41416	Roll Pin 1/8x1-1/8"	160	2	41324	Cap - Arm Pivot Cam
110	1	41512	Seat	161	2	4102	FP STABILIZER S/N>=413368
111	2	30624	Seat Armrest	<i>(not shown)</i>		na	FP Support Tube S/N 411001-413367
112	1	30628	Seat Armrest Bracket - Left	<i>(not shown)</i>		41110	Ret Ring -Ext 1" S/N 411001-413367
113	1	30626	Seat Armrest Bracket - Right	162	2	41432	Shoulder Bolt 3/8x7/8"
114	4	30625	Seat Armrest Spacer	163	2	41328	Shoulder Bolt 3/8x1/2"
115	1	4050	SEAT ASSEMBLY	164	4	41338	PHPSw/ext washer #10-24x5/16" Blk
116	1	40510	Seat Channel Weldment	165	2	41116	Retaining Ring - Takeup 1"
117	1	4202	SEAT MOUNTING BRACKET ASSEMBLY	166	3	41340	Shoulder Bolt 5/16x3/8"
118	1	40524	Seat Position Indicator	167	2	41342	Wave Washer 5/16x5/8"
119	1	40550	Seat Rail	168	2	41336	Footpedal Bearing Spacer
120	1	4051	SEAT RELEASE BRACKET ASSY	169	1	41805	AC Adapter & Cable – US & Canada 110V
121	1	4053B	SEAT RELEASE LEVER ASSY (GREEN)	<i>(not shown)</i>		4150	AC Adapter & Cable – Europe 220V
<i>(not shown)</i>		na	SEAT RELEASE LEVER ASSY (BLACK)	170	4	30119	Washer – SAE 3/8"
122	1	na	SEAT RELEASE LEVER BRKT ASSY	171	2	41027	Bumper – Footpedal II Male
123	1	40560	Seat Stop Pin Weldment	172	1	40517	Spacer - Pulley
124	1	4064A	Sensor - Hall Effect	174	4	41433	1/4 - 20 Prevailing Torque Flange Nut
125	1	4062A	Sensor - VR	175	2	41246	10-24x3/8 PHPS Type F Blkzinc
126	4	41122	Set Screw 5/16"-18x1/2	177	1	41464	Spacer - Pivot Disk Belt
127	8	na	Set Screw 1/4"-28x1/4	178	1	4300	Water Bottle Holder
128	4	41403	Set Screw 5/16"-24x1/4	179	1	4305	Reading Rack
129	1	40600	Shaft - Pivot Arm	180	1	4310	123GO! Instruction Panel
130	1	40604	Shaft - Rear	181	1	4315	Display Accessory Kit
131	2	41230	Shoulder Bolt 3/8x1"	182	2	41414	Washer - Shim .375x.563x.030
132	2	41232	Shoulder Bolt 3/8x1-3/4"	183	1	40156	Boot – Display
133	2	41134	Shoulder Bolt 3/8x2-1/2"	184	1	41467	3/8x3/4x.090 Thrust Washer
134	2	41136	Shoulder Bolt 5/16x1/4"	185	1	41469	5/16x3/8x1/4 Flange Bearing
135	1	41140	Spring - Front Seat Lever	186	1	41470	5/16-18 Locknut, Black Zinc
136	1	41138	Spring - Belt Idler	187	2	40368	10-32x5/16 HXMS-Zinc
137	2	41142	Spring - Rear Seat Lever	188	1	40362	Timing Belt Clamp-Top R
138	1	41144	Spring - Seat Release Bracket	189	1	40374	Belt-Flat
140	1	4099	SUPPORT ASSY - STEP THROUGH	190	2	40364	Timing Belt Clamp-Bottom Assy
141	1	41148	Swivel	191	1	40370	Bracket-Flat Belt Pulley Assy
142	1	na	Swivel Rel Lever Brkt Assy (see item 117)	192	1	40376	Pulley-Flat Belt Idler 3.38
143	1	4054B	SWIVEL RELEASE LEVER ASSY (GREEN)	193	1	30153	3/8-16x1-3/4 HHCS G5 Zinc
<i>(not shown)</i>		na	SWIVEL RELEASE LEVER ASSY (BLACK)	194	1	40366	Flat Belt Clamp-L
144	7	41152	THPS #10-24x1/2" Black	195	1	40363	Timing Belt Clamp-Top L
145	16	41154	THPS #10-24x3/4" Black	200	2	41542	Receptacle 1/4 Turn
146	8	41252	THPS #6-32x1/4	201	2	41541	Stud 1/4 turn
147	2	4070	TIMING BELT SPROCKET ASSY	202	2	41561	Mount, Rod End, Front
148	16	41156	Unut #10-24	203	2	41562	Mount, Rod End, Rear
149	1	41158	User Manual	204	4	41566	Circlip
150	10	41168	Washer - 1/4" External Star Black	205	8	41567	Thrust Washer
				206	4	50938	3/8-24 Jam Lock Nut

FIGURE 1F





NUSTEP
TRS4000
USER
MANUAL

FIGURE 2F

149

FIGURE 3F

