



Transforming Lives®

Accessory Kit Parts

- (1) 51564 Assembly, torso belt
- (1) 51567 Assembly, lap retractor
- (1) 50395 Bracket, lap belt guide
- (1) 51589 Assembly, lap buckle bracket, lower
- (1) 51600 Bracket, lap buckle, upper
- (4) 51756 Screw, BHSC, M8x1.25x25
- (4) 51757 Washer, split lock
- (2) 50565 Screw, BHSC, M6x1x16
- (2) 50603 Screw, BHSC, M6x1x12



Tools Provided

- 3mm hex key
- 4mm hex key
- 5mm hex key

- 1 Remove only the top two screws from back of seat using 3mm hex key.

Install torso belt assembly using two screws removed. Tighten screws.



Note: If accessory bag is installed onto seat back, simply install assembly on top of bag using the two screws removed. Tighten screws.



Thread belts into slot in guide at both ends of bracket as shown





Transforming Lives®

- 2** Install seat belt retractor assembly onto left side under swivel lever using two 50565 screws and 4mm hex key. Tighten screws.



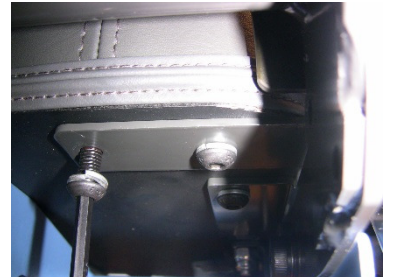
- 3** Slip 50395 guide bracket through slot between seat cushion and bracket on left side of seat.

Secure guide bracket by installing two 51756 screws with 51757 washers on bottom side of seat using 5mm hex key. Tighten screws.

Thread seat belt through guide bracket as shown.



- 4** Slip 51600 bracket through slot between seat cushion and bracket on right side of seat. Install two 51756 screws with 51757 washers using 5mm hex key. Tighten screws

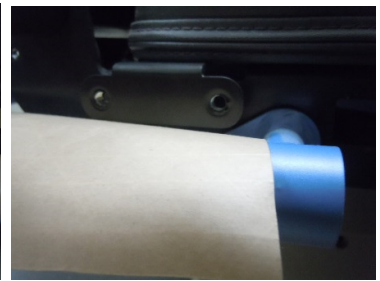


NuStep, Inc. • 5111 Venture Drive, Ann Arbor MI 48108 USA • 800-322-4434



Transforming Lives®

- 5** Protect swivel lever with a piece of tape. Slip 51589 assembly between 51600 bracket and the swivel lever. Install one 50603 screw loosely using 4mm hex key. Push the buckle over installed screw. Install the other 50603 screw loosely using 4mm hex key. Tighten screws evenly. Remove tape.





Transforming Lives®

How to Use the Lap and Torso Belt Accessory on the NuStep® T5 / T5^{XR}

To keep user's upper body in good position use torso belt and/or to keep user's lower body in good position use lap belt.

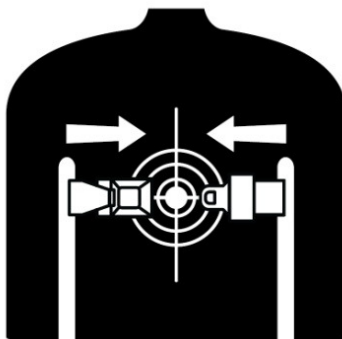
Torso Belt

Adjust the torso belt so that the release buckle is in the approximate center of the users chest.



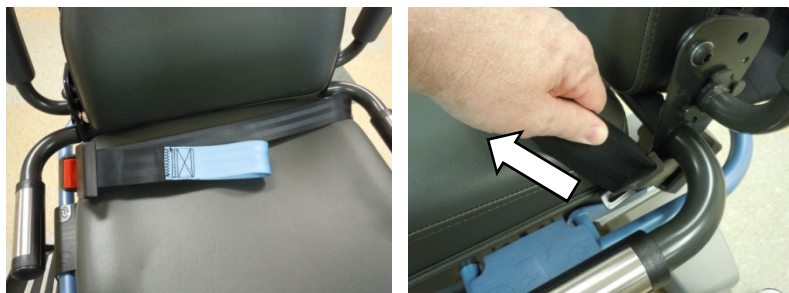
Pull out the torso belt from the retractor and clip it to the release buckle.

Pull the blue adjuster loop on the torso belt to take up slack as necessary. Grasp the black belt on the retractor side of the belt and pull outward to confirm locking.



Lap Belt

Pull out the lap belt from the retractor and clip it to the release buckle.



Pull the blue adjuster loop on the lap belt to take up slack as necessary. Grasp the black belt on the retractor side of the belt and pull outward to confirm locking.



Transforming Lives®



CAUTION

Body restraint.
User may not be able to get
off product once installed.
Ensure torso belt buckle is
accessible in the front.
Supervise use of product.

Materials:

Polypropylene, Polyester, ABS,
Steel.

Care Guide:

Clean Belts With Soap & Water
Do Not Immerse
Use No Bleach

